

# Light efficiency:

56 Lumen/Watt

# Light quality:

CRI: 95.6

# Color temperature:

5779 K

Output: 17834 lm

Peak: 101449 cd

Power: 320.3 W

PF: 0.99



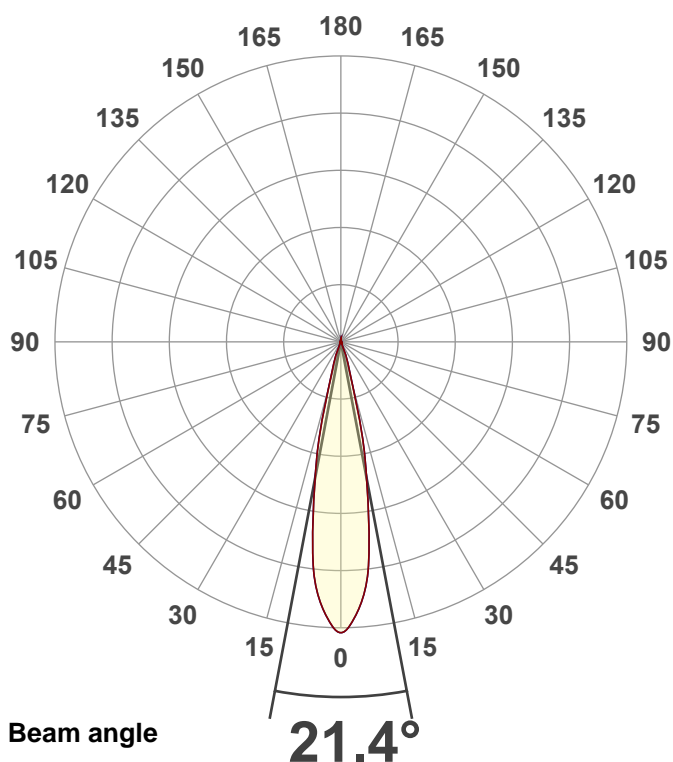
Product name:

PAR Z300 6K (Zoom 30°, Full On)

Item number:

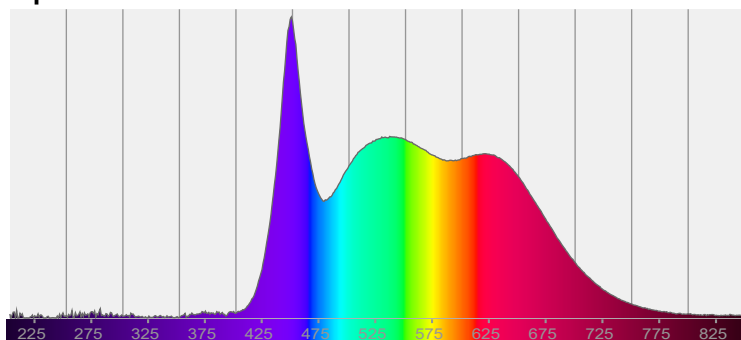
Date and time:

8/16/2025 12:49:29 PM

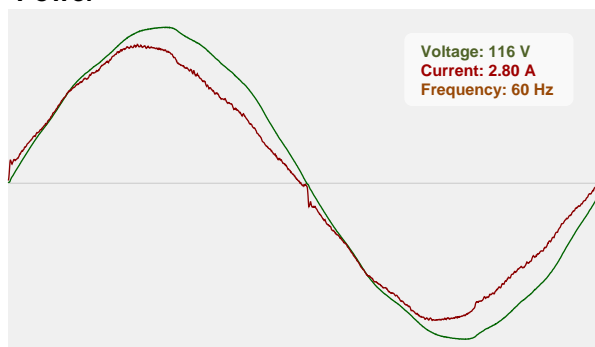


CIE 1931  
x: 0.327  
y: 0.335

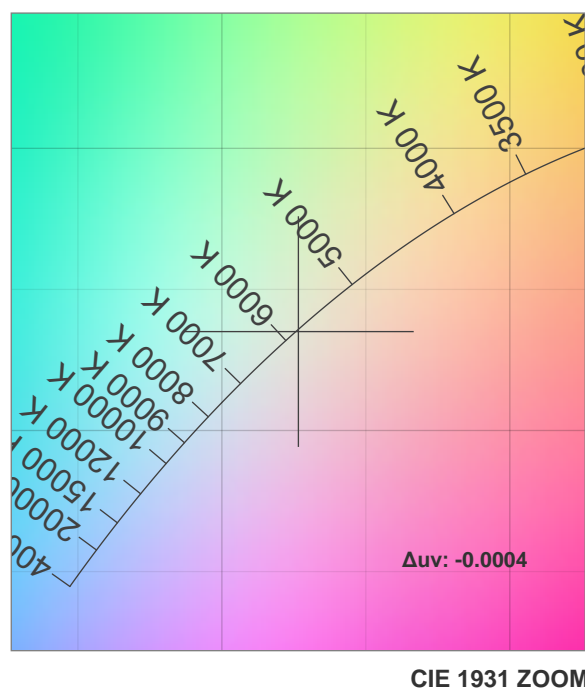
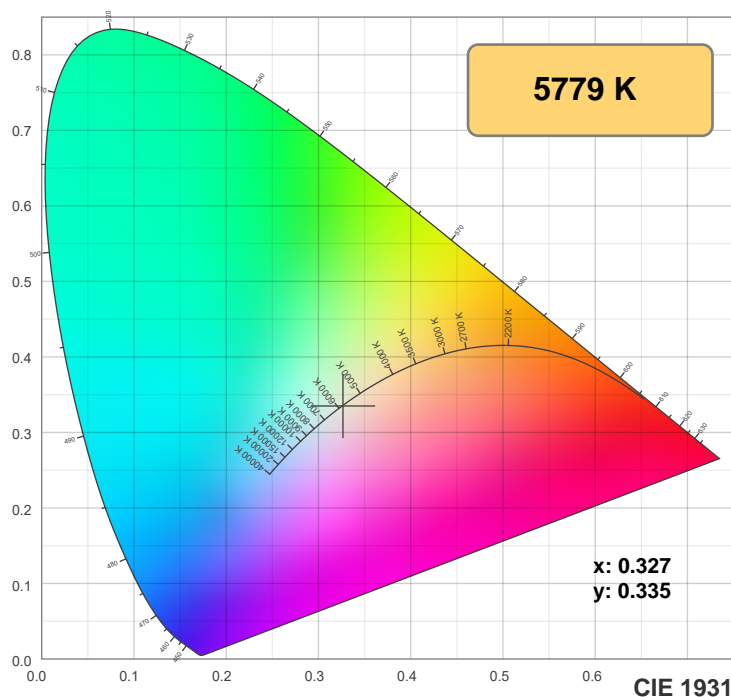
# Spectra



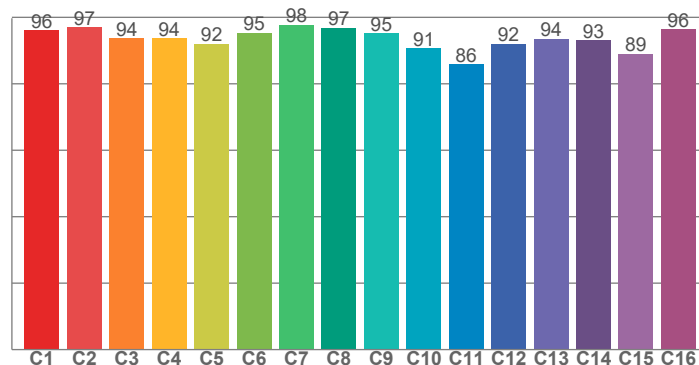
# Power



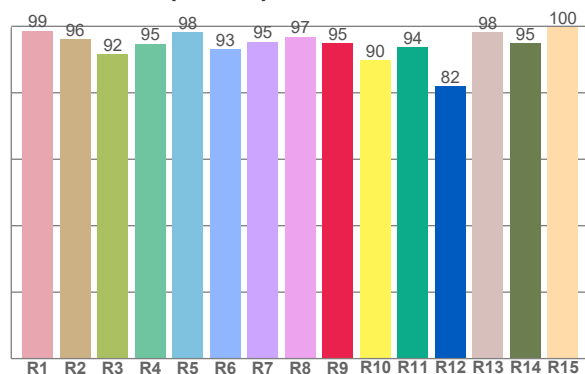
## Color details



### TM-30: 93.5



### CRI: 95.6 (R1-R8)



CRI R values, only R1-R8 are used to calculate final CRI value

R1	R2	R3	R4	R5	R6	R7	R8	R9	R10	R11	R12	R13	R14	R15
98.7	96.3	91.7	94.8	98.3	93.2	95.4	96.9	95.0	89.8	93.8	82.0	98.3	95.0	99.7

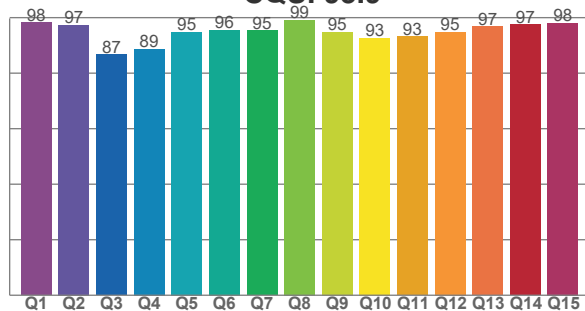
TM30 C values, 16 binned values out of total of 99 C values

C1	C2	C3	C4	C5	C6	C7	C8	C9	C10	C11	C12	C13	C14	C15	C16
96.0	97.1	93.6	93.7	92.0	95.4	97.8	96.9	95.2	90.7	85.9	92.0	93.5	93.0	89.0	96.4

CQS Q values

Q1	Q2	Q3	Q4	Q5	Q6	Q7	Q8	Q9	Q10	Q11	Q12	Q13	Q14	Q15
98.2	97.3	86.7	88.8	94.8	95.6	95.4	99.1	94.8	92.6	93.2	94.8	96.7	97.5	98.0

### CQS: 93.9



## Color parameters

Color temperature	Color rendering index	Red component	Color fidelity	Color gamut	Color quality scale	Color coordinate cie 1931	Color coordinate cie 1931	Color coordinate	Color coordinate	Color deviation from black body
CCT	CRI	CRI R9	TM30 Rf	TM30 Rg	CQS	x	y	u	v	$\Delta uv$
5779 K	95.6	95.0	93.5	102.6	93.9	0.327	0.335	0.205	0.316	-0.0004

# TM-30 details

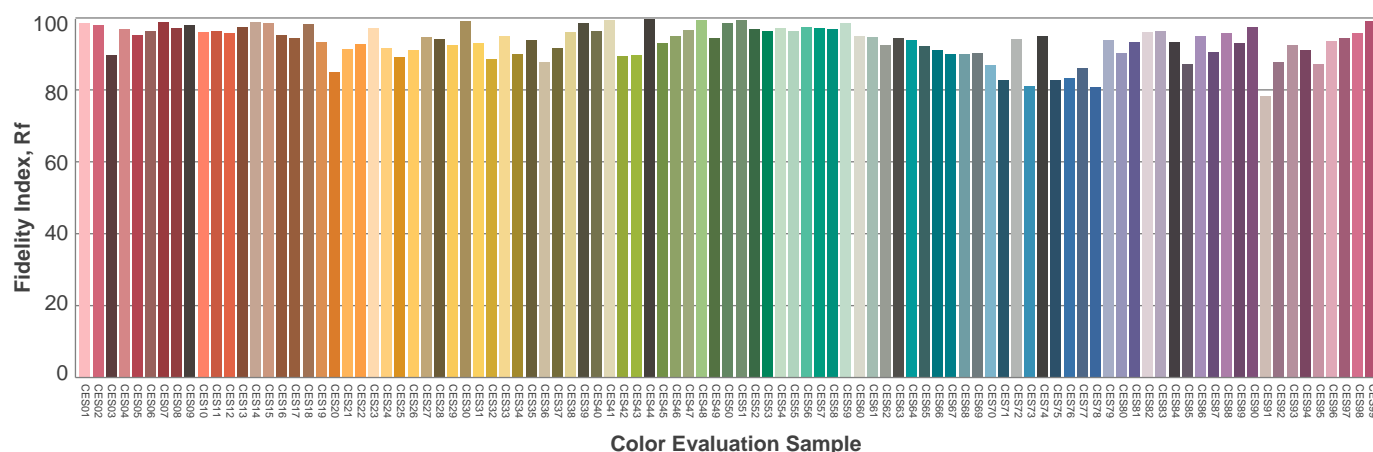
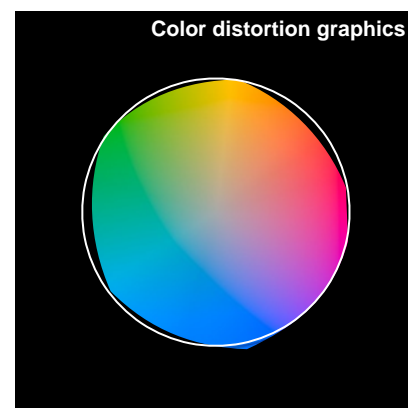
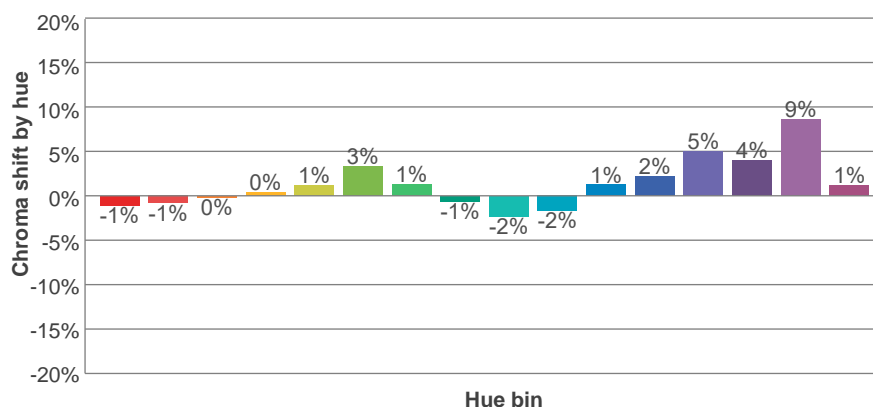
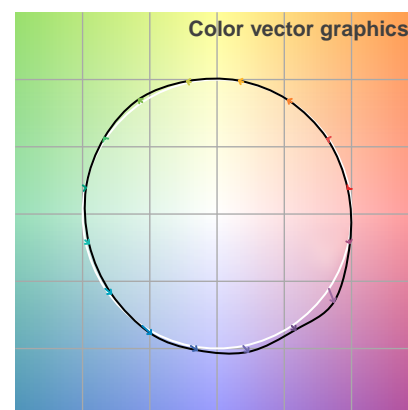
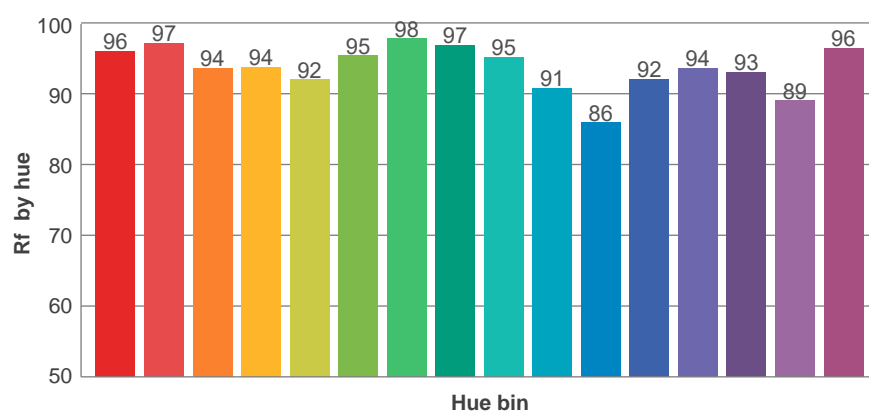
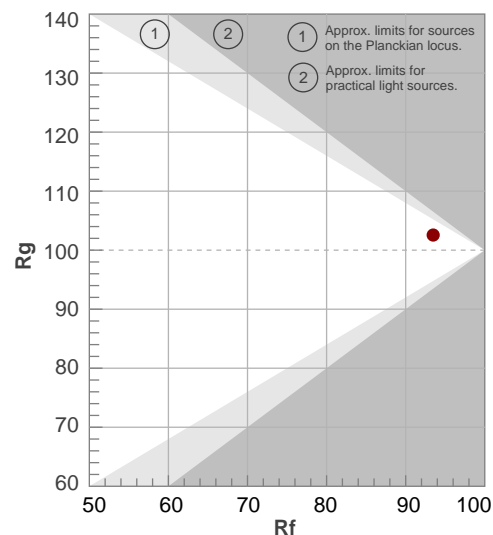
**Rf 93.5**

Fidelity index Rf

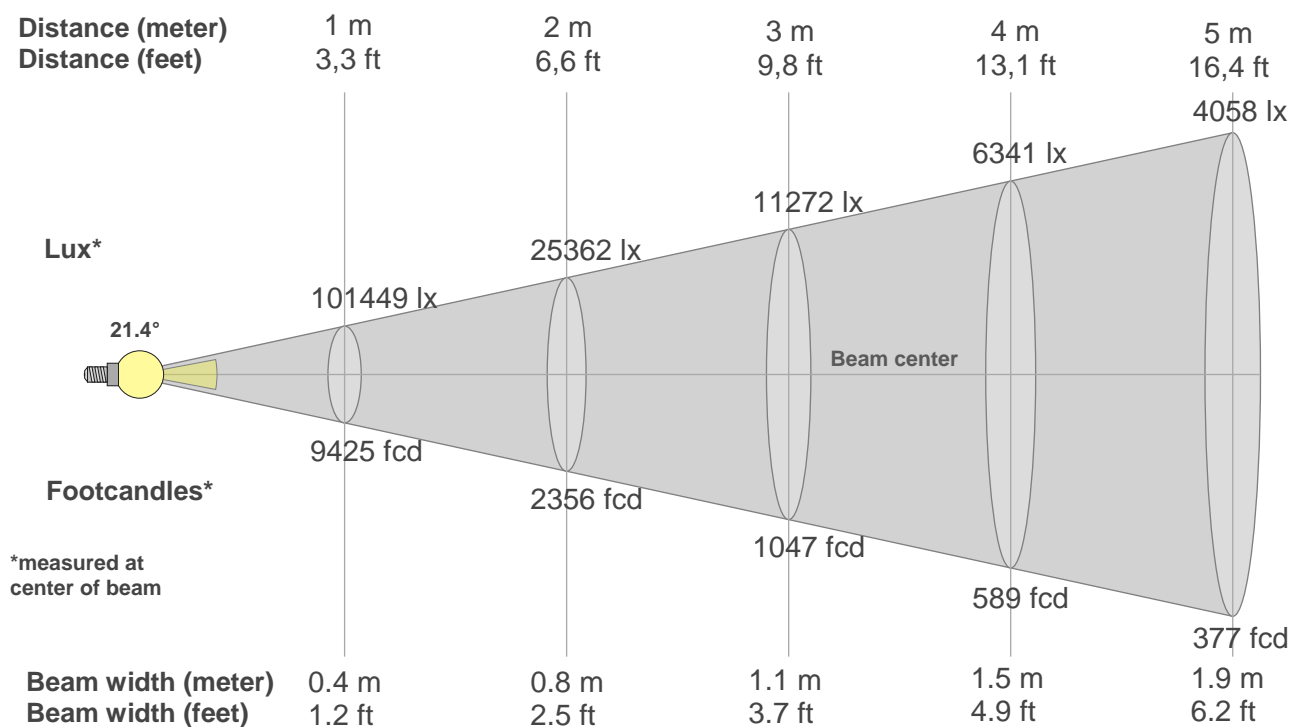
**Rg 102.6**

Gamut index Rg

Hue Bin	Ri	Shifts (%)	
		Chroma	Hue
1	96	-1%	-1%
2	97	-1%	1%
3	94	0%	3%
4	94	0%	3%
5	92	1%	3%
6	95	3%	1%
7	98	1%	-1%
8	97	-1%	0%
9	95	-2%	3%
10	91	-2%	5%
11	86	1%	9%
12	92	2%	5%
13	94	5%	3%
14	93	4%	1%
15	89	9%	-6%
16	96	1%	-2%



## Beam details



### Beam intensities from 1-20m

1m	2m	3m	4m	5m	6m	7m	8m	9m	10m	11m	12m	13m	14m	15m	16m	17m	18m	19m	20m
3.3ft	6.6ft	9.8ft	13.1ft	16.4ft	19.7ft	23ft	26.2ft	29.5ft	32.8ft	36.1ft	39.4ft	42.7ft	45.9ft	49.2ft	52.5ft	55.8ft	59.1ft	62.3ft	65.6ft
101449lx	25362lx	11272lx	6341lx	4058lx	2818lx	2070lx	1585lx	1252lx	1014lx	838lx	705lx	600lx	518lx	451lx	396lx	351lx	313lx	281lx	254lx
9424.9fcd	2356.2fcd	1047.2fcd	589.1fcd	377fcd	261.8fcd	192.3fcd	147.3fcd	116.4fcd	94.2fcd	77.9fcd	65.5fcd	55.8fcd	48.1fcd	41.9fcd	36.8fcd	32.6fcd	29.1fcd	26.1fcd	23.6fcd

### Intensities in 0° c-plane

0°	1°	2°	3°	4°	5°	6°	7°	8°	9°	10°	11°	12°	13°	14°	15°	16°	17°	18°	19°
101k	101k	101k	97k	93k	89k	85k	81k	72k	64k	56k	48k	41k	34k	28k	22k	15k	10k	8k	6k
100%	100%	99%	95%	92%	88%	84%	79%	71%	63%	56%	48%	40%	34%	28%	21%	15%	10%	8%	6%

### Intensities in 90° c-plane

0°	1°	2°	3°	4°	5°	6°	7°	8°	9°	10°	11°	12°	13°	14°	15°	16°	17°	18°	19°
101k	101k	101k	97k	93k	89k	85k	81k	72k	64k	56k	48k	41k	34k	28k	22k	15k	10k	8k	6k
100%	100%	99%	95%	92%	88%	84%	79%	71%	63%	56%	48%	40%	34%	28%	21%	15%	10%	8%	6%

### Intensities in 180° c-plane

0°	1°	2°	3°	4°	5°	6°	7°	8°	9°	10°	11°	12°	13°	14°	15°	16°	17°	18°	19°
101k	101k	101k	97k	93k	89k	85k	81k	72k	64k	56k	48k	41k	34k	28k	22k	15k	10k	8k	6k
100%	100%	99%	95%	92%	88%	84%	79%	71%	63%	56%	48%	40%	34%	28%	21%	15%	10%	8%	6%

### Intensities in 270° c-plane

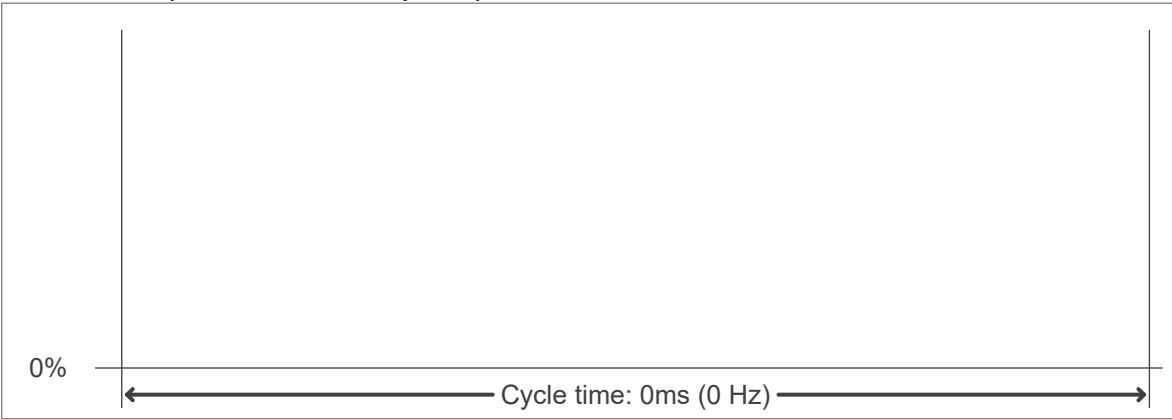
0°	1°	2°	3°	4°	5°	6°	7°	8°	9°	10°	11°	12°	13°	14°	15°	16°	17°	18°	19°
101k	101k	101k	97k	93k	89k	85k	81k	72k	64k	56k	48k	41k	34k	28k	22k	15k	10k	8k	6k
100%	100%	99%	95%	92%	88%	84%	79%	71%	63%	56%	48%	40%	34%	28%	21%	15%	10%	8%	6%

Beam angle 50%	Field angle 10%	Cutoff angle 2,5%	Intensity ratio in 120° cone	Intensity ratio in 90° cone
21.4°	33.8°	42.4°	82.8%	80.2%

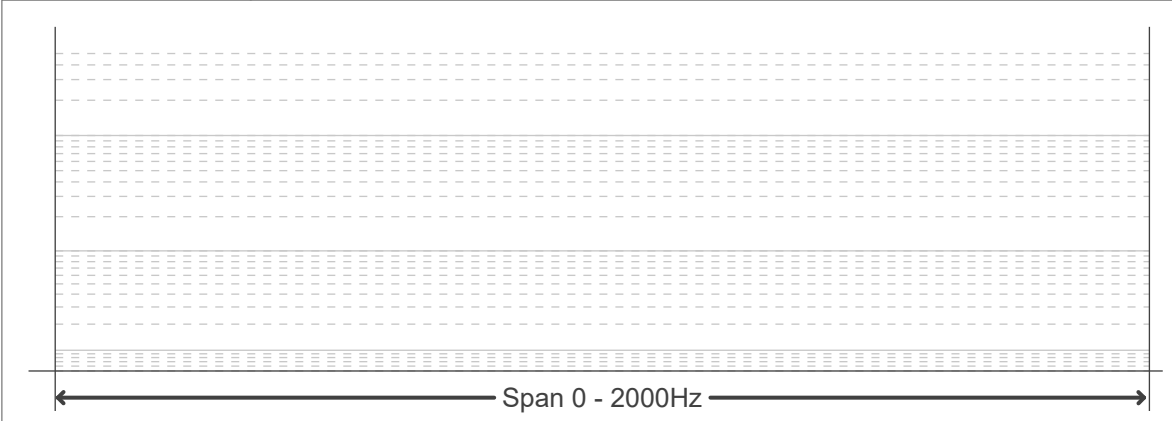
Flicker curve (complete sampled flicker signal)



Flicker frame (frame of one flicker period)



Flicker FFT (frequency scope of flicker curve)



Flicker results:

Flicker frequency:		n/a Hz	
Flicker index:	n/a	JA8/10 40Hz	n/a %
Flicker percentage:	n/a %	JA8/10 90Hz	n/a %
SVM: (Visual flicker)	n/a	JA8/10 200Hz	n/a %
PstLM	n/a	JA8/10 400Hz	n/a %
Mp	n/a	JA8/10 1000Hz	n/a %

Flicker conditions:

Sample rate:	n/a samples/second
--------------	--------------------